



Melbourne Cricket Club Policy

MCC Museum Collection Development Policy

Reference Number	POL131MAH
Policy Description	Informs staff and potential donors or lenders to the Melbourne Cricket Club Museum (MCCM) of collection acquisition guidelines.
Effective Date	January 17 2020
Policy Tier	Tier 2
Responsible Department	MCC Club Services, Sport and Heritage

Document Control

Document Version	Date	Description of Change	Authorised By
1.0	July 2014	Policy Established	Museum Manager
1.1	September 2015	Refinement to fine art collecting	GM, Membership & Heritage
1.2	January 2020	Minor editing	GM, Club Services & Heritage
2.0	January 2025	Name change, reformatting, minor editing	GM, CSS&H

Distribution

Recipients	Method of Distribution	Latest Date of Distribution
All Staff	Club Hub	January 2020
General Public	MCC and ASM Websites	January 2020

All rights reserved. No part of this publication may be printed, reproduced, stored in retrieval or transmitted, in any form or by any means, without the expressed prior permission in writing from the owners.



1. Purpose

The purpose of this policy is to provide guidance regarding the selection and acquisition of material into the Melbourne Cricket Club Museum (MCCM) collection. It also outlines the process for permanent removal of items from the collection and areas of collecting that the MCC is currently interested in developing.

2. Scope

The MCCM Collection Development Policy intends to provide guidance and direction to all MCC personnel, volunteers and general public (but especially potential donors and lenders) on material suitable for the MCCM collection.

3. Background

The MCCM was founded in 1969 and is a private museum owned by Melbourne Cricket Club Heritage Limited (MCCH). The MCCM is currently located within the Members Reserve at the Melbourne Cricket Ground (MCG) and the current facility was opened in November 2006. It sits alongside, and is attached to, the Australian Sports Museum (ASM).

Whilst its operations, resources and services are primarily directed towards the needs of the MCC (Members, Committee and staff), it also recognises that it has a social responsibility to the public, especially since it forms part of the ASM experience for tourists outside MCG event mode.

The day-to-day operations of the MCCM collection are managed by the MCC Club Services, Sport and Heritage Department. MCCH assumes financial risk in relation to the ongoing operation, and recurrent expenditure, of the MCCM.

The MCCM exhibits and interprets objects relating to the history of the MCC and its various activities, inside and outside sport. The objects displayed in the MCCM are either owned by the MCC, are on loan from individuals or derive from the two public museum collections also managed by the MCC Club Services, Sport and Heritage Department: the ASM collection and the Australian Gallery of Sport & Olympic Museum (AGOSOM) collection.

In addition, the MCCM is operated in line with the MCC's values:

- **Respect The Past And Shape The Future**
We celebrate our rich heritage, and blend this with fresh thinking to remain at the forefront as our world evolves.
- **Strive For Excellence**
We always look to improve, setting the standard in everything we do, to be the club and the stadium that everyone loves.
- **Lend A Hand**
We know we are stronger when we work together and collaborate, bringing everyone on the journey to cross the finish line as a team.
- **Play With Pride, Passion And Purpose**
Our purpose unites us, our passion drives us, and our pride in everything we do, gives us the energy and momentum to bring this iconic club and stadium to life.



4. Collection Development

4.1. Collecting Framework

The MCCM has been formally collecting material since its foundation in 1969, however the MCCM's collection began to form much earlier, commencing with significant items accumulated and retained by the MCC since its beginnings in the 1830s.

Acquisition Methods

- Donations
Donations are the primary method of acquiring material into the MCCM collection. A donation is defined as the formal acquisition of objects that build the permanent MCCM collection via the transfer of ownership to Melbourne Cricket Club Heritage Ltd. in perpetuity. A Deed of Gift is signed as part of the donation process, documenting the permanent transfer of ownership. Donation of objects to the MCCM for the MCCM is tax deductible if undertaken via the Australian Government's Cultural Gifts Program. This is communicated to potential donors when appropriate.
- Purchases
The MCCM has an acquisitions budget to purchase items, either at auction or by private sale. The budget is reviewed annually.
- Commissions
The MCCM acquisitions budget also enables the commissioning of artwork.
- Bequests
All bequests must be assessed against the criteria within this policy. Any bequests that do not sit within the criteria outlined within this policy will be declined.
- Internal Transfers
Material obtained or produced by departments of the MCC through the activities of the club e.g. Events, Facilities or Commercial Operations, can be transferred to the MCCM collection via internal transfer, but must already be the property of the MCC.
- Display Copies and Props
Reproduction prints or items purchased for the specific purpose of display, but which do not hold heritage value, may form part of the collection to fulfil specific exhibition requirements. Objects offered for acquisition may be accepted as Display Copies or Display Props. In this instance, the proposed acceptance of the objects as props, rather than fully accessioned collection material, will be discussed with the donor prior to formal receipt of the objects. In lieu of a signed Deed of Gift, an email, letter or set of notes taken at the time of sourcing or creation of the item by the MCC Club Services, Sport and Heritage Department team will suffice to document the transaction and the provenance of the item.



These items may be deaccessioned when deemed no longer useful, at the discretion of the Collections Manager and without requiring the formal deaccessioning process (see 5. below).

- Inward Loans

Inward loans to the MCCM collection may be considered for exhibition purposes. These offers will be assessed by MCC Club Services, Sport and Heritage Department staff in line with exhibition schedules. Loans must be documented on an Inward Loan Agreement. This agreement outlines each party's responsibilities, the term of the loan, insurance and valuation details.

4.2 Consideration Factors

The development of the MCCM collection will be informed by the content and collecting focus of various other collections, to prevent the duplication of effort or material:

- material held in the Melbourne Cricket Club Library (MCCL) collection and Melbourne Cricket Club Archive (MCCA) collection.
- external (non-MCC) specialised repositories of sporting material, with whom MCCM will work in collaboration, to build up collections of relevant objects.
- material held in the two public museum collections also managed by the MCC Club Services, Sport and Heritage Department: the ASM collection and AGOSOM collection.
- material collected by the Melbourne Football Club.

4.3 Designated Collecting Areas

Heritage

The MCC will acquire material relating to its activities and those of its members (when pertaining to the MCC). This includes selected sports, sporting events and associated individuals/places across the following areas:

- *Melbourne Cricket Club*

All aspects of the history, development and activities of MCC and its members (when pertaining to the MCC).

NOTE: Original, internally created records of the MCC and branded items created for the MCC as part of its business activities will be referred to the MCCA collection.

Published written works of the MCC, MCG and associated individuals will be referred to the MCCL collection.

- *MCC Sporting Sections*

Notable activities and achievements of the MCC's Sporting Sections: Australian football, baseball, croquet, golf, hockey, lacrosse, lawn bowls, real tennis, shooting, squash, tennis, netball and cricket (see below). Material associated with disbanded MCC Sporting Sections will also be collected.



- *Cricket*

While significant objects not directly related to Australian cricket may occasionally be acquired, the MCCM collecting will focus on Australia's involvement in the game and, where appropriate, will aim to acquire objects associated with the following, involving both male and female players:

- Test cricket involving Australia, particularly Ashes cricket.
- Limited overs international cricket involving Australia or played at the MCG.
- Intercolonial cricket, particularly played at the MCG.
- First class interstate cricket, particularly played at the MCG or involving Victoria.
- Domestic T20 cricket played at the MCG or involving Victorian teams.
- MCC Club cricket, at all levels.

NOTE: Cricket objects which fall outside the MCCM collecting focus will be referred to the public collections (ASM or AGOSOM – if Olympic Games themed) or other appropriate institutions.

- *Australian Football*

Objects relating to the Melbourne Football Club from the periods that it has been a Section of the MCC: 1858–1980 and 2009 onwards.

- *MCG*

All areas of the ground's development will be collected. The following aspects will be prioritised:

- The technical development of the ground, including the arena and grandstands.
- Sporting and non-sporting events at the ground, including wartime use, royal visits, concerts, etc.
- The 1956 Olympic Games: specifically the role of the ground and the MCC in that event.
- The history and development of Yarra Park, as the location of the MCG.

Fine art

The MCC will aim to acquire fine art if it features the following as its primary subject matter:

- The MCC and its membership.
- MCC Sporting Sections (current and disbanded)
- The MCG and surrounding Yarra Park, including events held in these locations.
- Additional venues and locations managed by the MCC (Albert Ground, etc...)

Current Collecting Aims

The MCC is currently particularly interested in collecting material related to:

- MCC women's cricket and MCC women's football
- Significant non-sporting events at the MCG (e.g. concerts)
- Female-centered sporting events at the MCG
- Aboriginal and Torres Strait Islander peoples involvement in events held at the MCG and their connection to the land the MCG stands on and surrounding Yarra Park area



4.4 Collection Criteria

All objects offered to the MCCM will be reviewed and assessed by appropriately trained and experienced MCC Club Services, Sport and Heritage Department staff. At the current time the assessment process for all five heritage collections is being managed by the Collections Curator.

Preference will be given to objects that are:

- Offered with relevant documentation.
- Offered via a written approach, with accompanying images.
- Offered with information about the object's use, condition, history, provenance and significance, so that an accurate assessment can be made.

It is important to note that:

- Objects that duplicate existing collection holdings are likely to be declined.
- Badly damaged objects will normally be declined unless the damage is less important than the item's representational value.
- Objects which cannot be properly displayed, stored or conserved, or at a cost that cannot be met by the MCCM, will not be collected.
- If a collection is offered but it contains material that is not required (surplus, damaged or duplicate objects) the preference will always be to accept only the most relevant elements.
- Conditional offers (for example, that objects offered must be immediately or permanently displayed) will normally be declined.

4.5 Non-Collecting Areas

The MCC Museum will not collect:

- Published works
- Melbourne Cricket Club business records

5. Deaccessioning and Disposal

Appropriately trained and experienced MCC Club Services, Sport and Heritage Department staff will be responsible for identifying items suitable for deaccessioning. In all instances this will involve initial ratification from the MCC General Manager, Club Services, Sport and Heritage and formal confirmation from the MCCH Board. Every step of the process will be recorded in detail and all documentation will be retained.

Deaccession Criteria

Objects will only be considered for deaccessioning from the MCCM collection if at least one of the following applies:

- The object no longer complies with this Collection Development Policy. If it is MCC related, consideration will be given to whether it is suitable for transfer to the MCCL collection or MCCA collection.
- The object is damaged beyond repair.



Melbourne Cricket Club Museum Collection Development Policy



- Conservation and storage costs are beyond the means of the MCCM.
- The object is a lesser quality duplicate of an object already owned by the MCCM and does not have provenance to provide it with value beyond its own inherent physical interest.
- The object lacks supporting information to enable precise identification or to establish its relevance to the collection.

In addition, there must be no ongoing dispute over legal ownership involving one or more external parties.

Deaccession Procedure


Objects will, in the first instance, be reviewed by the MCC Collections Curator, the MCC Collections Manager and the MCC Executive Manager, Museum & Heritage Services, to establish that they fit the Deaccession criteria. The following procedures will be followed:

- A written recommendation by the MCC Collections Curator, including details of source and provenance of object, reasons for seeking deaccession and suggested avenue of disposal.
- All potential deaccessioning will be considered sensitive and the advice of the MCC General Manager, Club Services, Sport and Heritage will be sought on all occasions.
- The MCC General Manager, Club Services, Sport and Heritage will request formal approval from the MCCH Board.
- A statement will be produced, confirming the MCCH Board's decision and confirming the agreed avenue of disposal.
- A "cooling off" period (as defined below) may be shortened or waived when deaccessioning is recommended on one or more of the following grounds:
 - If the physical fabric of the material has deteriorated completely and irrecoverably;
 - If the material is deemed hazardous, a threat to personnel, and/or in breach of Occupational Health and Safety guidelines;
 - If legal advice supports the prompt transfer of the material to another party;
 - If the MCC decides to support a donor's request for the return of donated material.

Disposal Procedure

- In the first instance the object will be offered to the original donor if that organisation/ individual or their family can be determined.
If the donor or family of donor is untraceable, or if they indicate they have no further interest in the object(s), the object(s) will then be:
 - Offered to, or swapped with, an appropriate public collection and appropriate paperwork completed transferring legal ownership.
 - Used as an interpretative tool (for example, in visitor programs).
 - Sold by public auction, if appropriate, with paperwork completed transferring legal ownership. All funds obtained from the sale of a deaccessioned item will be used ONLY for acquiring new items for the collection and/or conservation of the existing collection.
 - If the above avenues of disposal are unavailable the object(s) can be destroyed or recycled (if appropriate).
- The object will be held for a "cooling off" period of 12 months, after which time the decision to deaccession will be reviewed by the MCCH and the course of action confirmed.
- MCC staff, volunteers, MCC Committee members, MCCH members and their respective families are all prohibited from obtaining deaccessioned objects.



POWERED BY 

Melbourne Cricket Club Policy

Melbourne Cricket Club Museum Collection Development Policy



The disposal process will be undertaken in a transparent and open manner.

Record Keeping

Records detailing the disposal of an object will be kept in perpetuity and be made available in response to any reasonable inquiry.

5. Inward Loans

Inward loans may be accepted if the objects are required for short-term or long-term display in the MCCM, ASM or in the wider MCG. Where possible, the MCCM will rely on objects in its own collection and within the associated AGOSOM and ASM collections to create and maintain displays.

Irrespective of their deductible gift recipient status, all lending entities, both individuals and sporting stakeholders will be invited to enter into a standard loan agreement whereby they agree to loan specifically requested objects for display for a renewable fixed term

The Loan Agreement sets out the parameters of the loan and lists the objects to be loaned in an accompanying schedule. It also stipulates the responsibilities of the owner and the MCCM.

While the MCCM prefers to issue standard inward loan paperwork, on occasion the MCCM may use the outward loan paperwork of another institution.

A Loan Agreement must be read, understood, agreed and countersigned prior to the MCC taking receipt of the object(s) at the MCG.

6. MCC Sporting Section Loans

The MCC Club Services, Sport and Heritage Department staff will negotiate loans from the MCC Sporting Sections:

- Baseball
- Bowls
- Cricket
- Croquet
- Golf
- Hockey
- Lacrosse
- Real Tennis
- Shooting
- Squash
- Tennis
- Netball
- Women's football

Loan Purpose

Objects taken on loan will primarily be for predetermined display purposes within the MCC Members Reserve or MCCM.

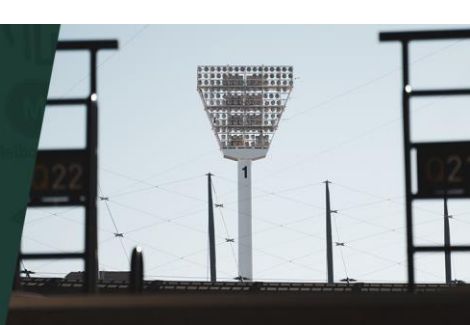
Some MCC Sporting Sections may have access to limited storage facilities. In these circumstances the Sporting Section may negotiate to store significant objects within the MCC Club Services, Sport and Heritage collection stores on loan, renewing the agreement on an annual basis.



POWERED BY 

Melbourne Cricket Club Policy

Melbourne Cricket Club Museum Collection Development Policy



See the following decision tree for more details (p10).

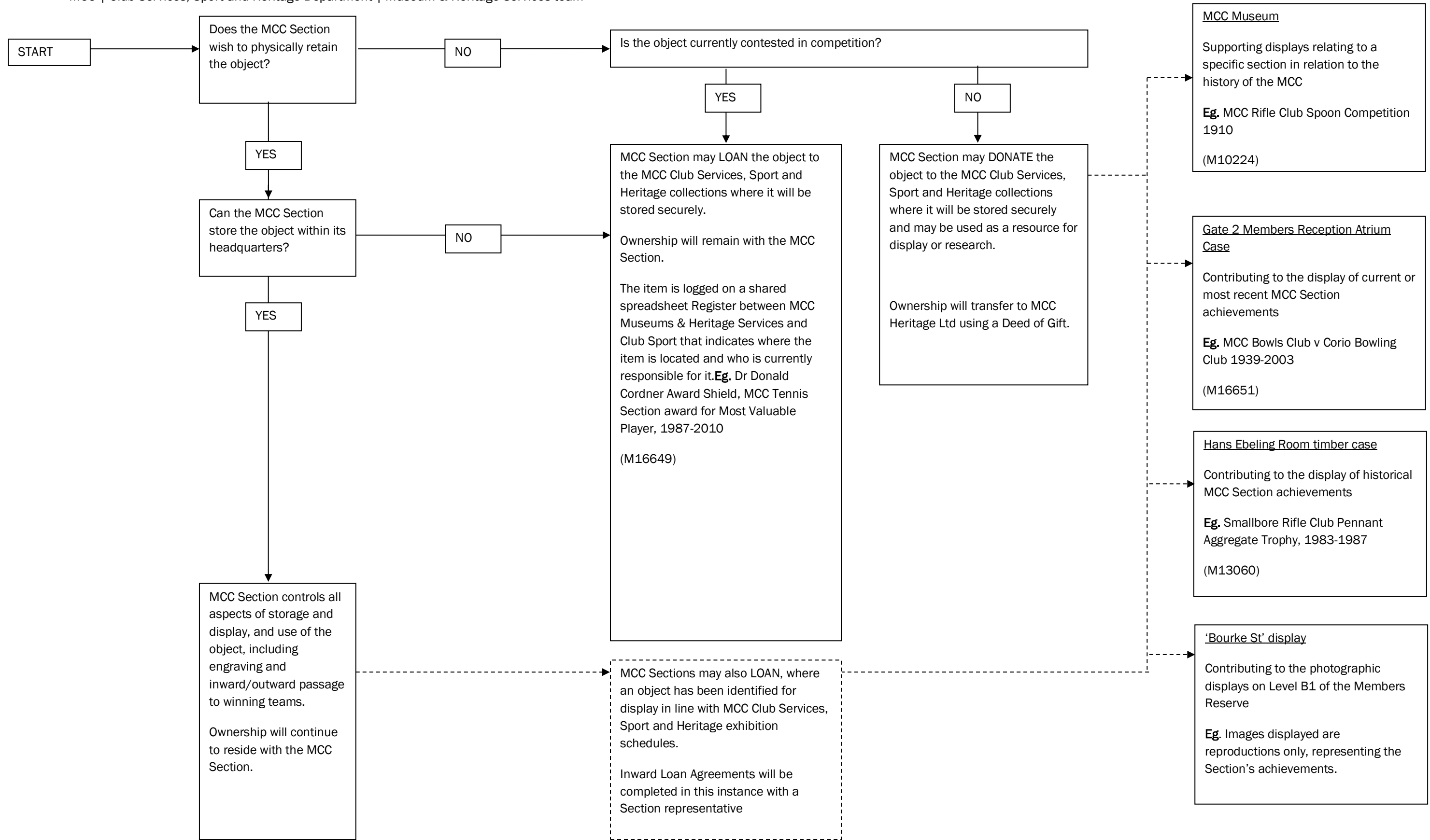
Access to objects on loan

An MCC Sporting Section object may require engraving or presentation throughout the year. The object will be made available to the Sporting Section for these purposes and the movement documented on the MCC Sporting Section & Cricket Trophy Register and in Vernon CMS. The information recorded should include the purpose of the transit, the expected return date to the MCC Club Services, Sport and Heritage Department and the condition of the object.

If the object is known to not be returning to the MCC Club Services, Sport and Heritage Department, it should be removed from the Register and the record in Vernon CMS updated but retained.

MCC SPORTING SECTION OBJECT OPTIONS

MCC | Club Services, Sport and Heritage Department | Museum & Heritage Services team





7. Related Statutory Obligations

Activities undertaken by MCCM will be governed by the laws of the state of Victoria and the Commonwealth of Australia. Specific museum related activities shall also be informed by the following:

The Crimes Act 1958 (Vic)
International Council of Museums Code of Ethics
Australian Museums and Galleries Association Code of Ethics

8. Definitions

MCC	Melbourne Cricket Club
MCCL collection	Melbourne Cricket Club Library The collection of reference and resource material owned by Melbourne Cricket Club Heritage Ltd and managed by the Melbourne Cricket Club's Club Services, Sport and Heritage Department.
MCCM	Melbourne Cricket Club Museum The display space located inside the Members Reserve, on Level B1 of the Melbourne Cricket Ground.
MCCM collection	The collection of heritage objects owned by Melbourne Cricket Club Heritage Limited and managed by the Melbourne Cricket Club's Club Services, Sport and Heritage Department.
MCCA collection	Melbourne Cricket Club Archive collection The collection of business records owned by the Melbourne Cricket Club and managed by the Melbourne Cricket Club's Club Services, Sport and Heritage Department.
AGOSOM collection	Australian Gallery of Sport & Olympic Museum collection The collection of heritage objects owned by the Melbourne Cricket Ground Trust and managed by the Melbourne Cricket Club's Club Services, Sport and Heritage Department.
ASM	Australian Sports Museum



	The display space located inside Gate 3, on Level 1 and B1 of the Melbourne Cricket Ground.
ASM collection	The collection of heritage objects owned by Australian Sports Museum Limited and managed by the Melbourne Cricket Club's Club Services, Sport and Heritage Department.
MCCH	Melbourne Cricket Club Heritage Ltd. Legal owner of two MCC Heritage collections (MCCL & MCCM) and manager of a third (MCCA).
Donation	The act of acquiring of objects through legal transfer of ownership at no cost, to build a permanent collection, with ownership transferring to Melbourne Cricket Club Heritage Ltd.
Display Copies	Display Copies are two-dimensional paper objects donated, commissioned or reproduced for the specific intention of display. A Display Copy can coexist with an original if it is preferred that the original is preserved in storage due to potential light damage while on display for prolonged periods. Environmental conditions are difficult to control around the stadium, therefore it is also preferred that Display Copies are used for stadium dressing where possible.
Display Props	Display Props are objects which illustrate or educate and do not hold heritage or significance value. They have the potential to be handled by visitors to the museum and exist to be used in some way that accelerates learning outcomes within a display or educational program.
Inward Loan	The act of borrowing objects belonging to others for the purposes of display.
Deaccession	The administrative act whereby an object is removed from the permanent collection.
Accession	The administrative act whereby an object is added to the permanent collection

9. Related Documents

Related documents include:

- Australian Sports Museum Collection Development Policy POL129MAH
- Melbourne Cricket Club Archives Collection Development Policy POL033MAH
- Melbourne Cricket Club Library Collection Development Policy POL024MAH
- Australian Gallery of Sport & Olympic Museum Collection Development Policy POL130MAH



- Melbourne Cricket Club Heritage Collections Access Policy POL143CSH
- Australian Sports Museum Food and Beverage Function Policy POL121MAH

10. Review and Approval History

This policy was approved by **Dean Matthews, General Manager, Club Services, Sport & Heritage**, on March 13, 2025.

It will be reviewed every two years.